

## Injury attendances to Royal Albert Edward Infirmary Emergency Department

### January 2012 to December 2012

This report summarises recorded injury attendances to Royal Albert Edward Infirmary Emergency Department (ED) between January 2012 and December 2012.

From January 2012 to December 2012 there were 33,764 injury attendances to Royal Albert Edward Infirmary ED. Males accounted for over half (56%) of all attendances. The month with the highest attendances for injury was May (n=3,268) with December (n=2,456) having the lowest attendances (**Figure 1**). The majority (92%) of attendances were recorded as other injury. Assaults accounted for 3% of all injury attendances, road traffic collisions (RTC) 3% and deliberate self-harm (DSH) 2% (**Table 1**).

For all injuries, the highest proportions of attendances were for persons aged 5 to 19 years (26%) or 20 to 34 years (24%) (**Figure 2**). Over four in ten (41%) DSH attendees were aged 20 to 34 years (**Figure 3**).

**Table 2** shows the location of the incident of injury attendances. Over four in ten (44%) of injuries occurred in the home, 10% occurred in a public place, 8% at work and 5% occurred at an educational establishment.

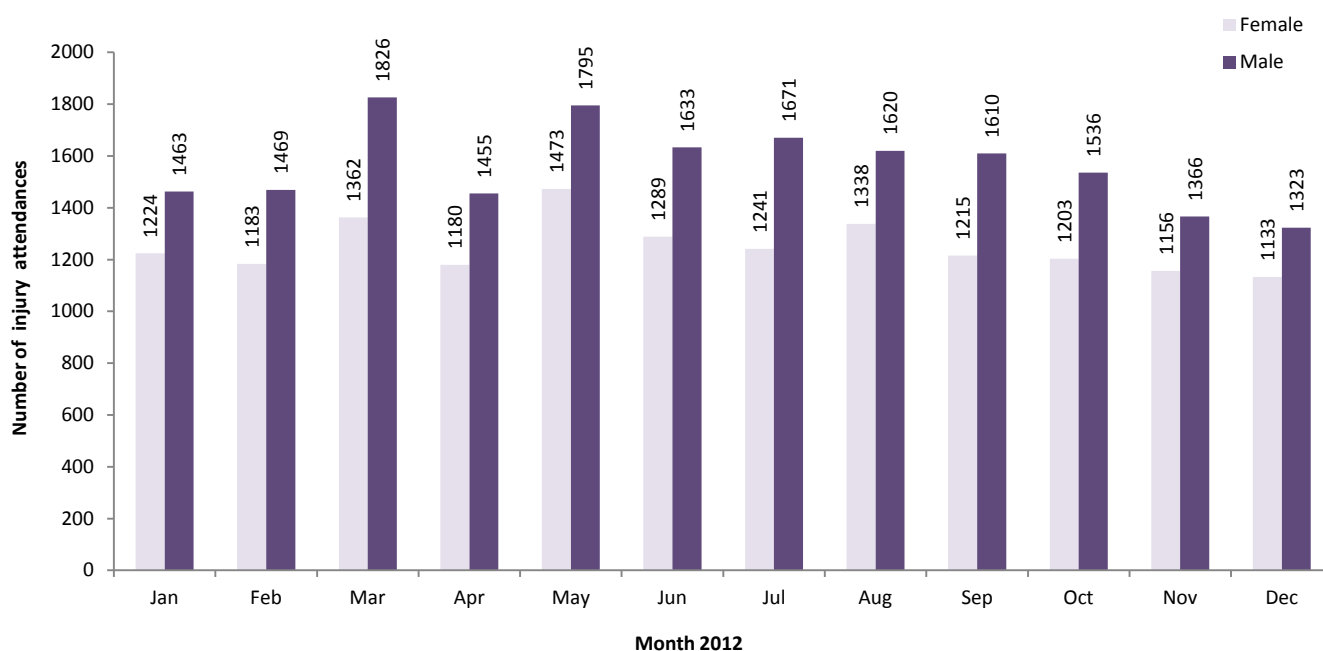
**Table 3** shows the ethnicity of injury attendees to Royal Albert Edward Infirmary ED. Over nine in ten (97%) were recorded as white.

The disposal of a patient can give an indication of the severity of the injuries sustained. Almost six in ten (58%) were discharged, nearly four in ten (37%) were referred and 4% were admitted (**Table 4**). Almost nine in ten (89%) RTC attendees were discharged. Almost four in ten (38%) DSH attendees and assault attendees (37%) had a referral/follow-up (**Table 5**).

**Table 6** shows the arrival methods of injury attendances at Royal Albert Edward Infirmary ED. Around one in seven (14%) arrived by ambulance.

**Table 7** shows assault attendances to Royal Albert Edward Infirmary ED. Almost seven in ten (69%) of assault attendees were male and nearly half (46%) were aged 20 to 34 years. Almost four in ten (38%) occurred in a public place whilst a similar proportion (35%) of assault attendees arrived at the ED by ambulance.

**Figure 1: Royal Albert Edward Infirmary ED: Total injury attendances by gender and month, January 2012 to December 2012**

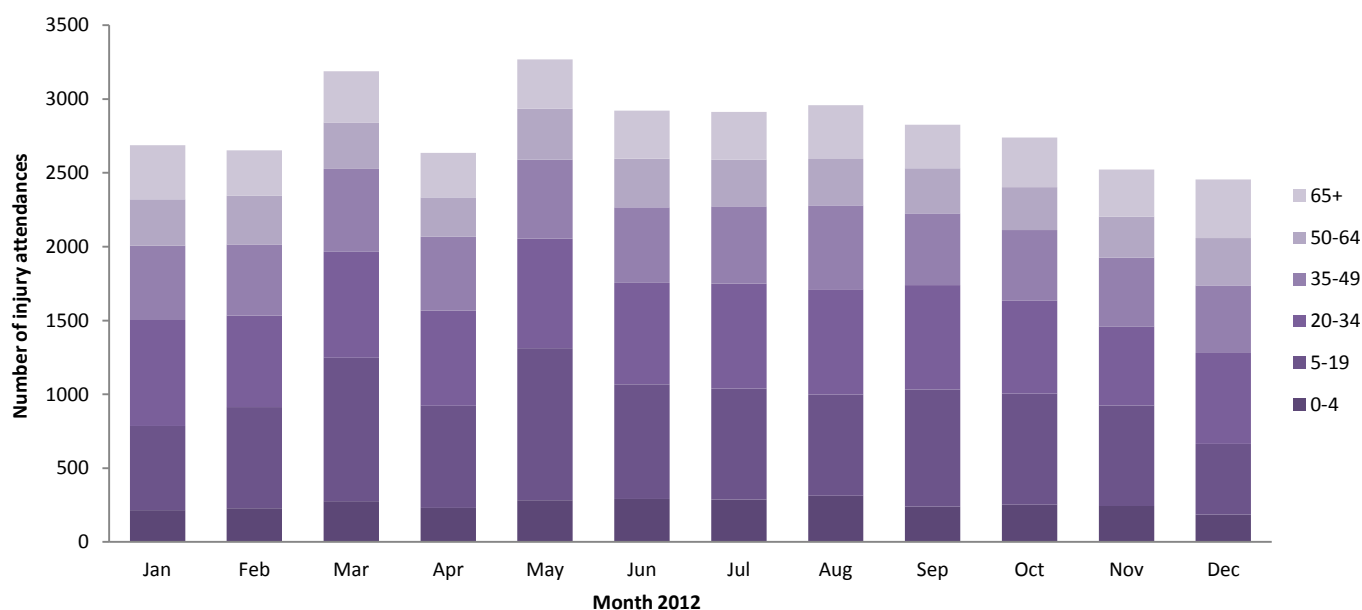


**Table 1: Royal Albert Edward Infirmary ED: Total injury attendances by injury group and month, January 2012 to December 2012\***

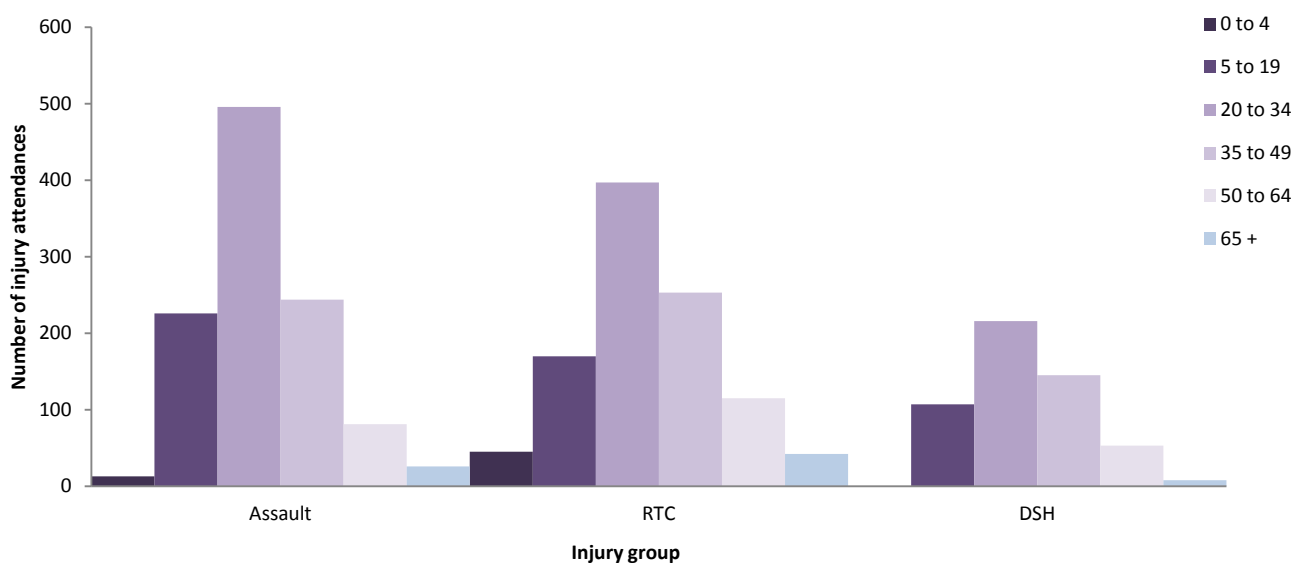
Injury group	Jan	Feb	Mar	Apr	May	Jun	Jul	Aug	Sep	Oct	Nov	Dec	Total	%
Other injury	2443	2406	2988	2402	3037	2697	2698	2743	2604	2559	2320	2230	31127	92
Assault	92	80	87	94	98	112	87	91	83	66	82	114	1086	3
Road traffic collision	106	123	70	101	93	70	80	70	84	76	78	71	1022	3
Deliberate self-harm	46	43	43	38	40	43	47	54	54	38	42	41	529	2
<b>Total</b>	<b>2687</b>	<b>2652</b>	<b>3188</b>	<b>2635</b>	<b>3268</b>	<b>2922</b>	<b>2912</b>	<b>2958</b>	<b>2825</b>	<b>2739</b>	<b>2522</b>	<b>2456</b>	<b>33764</b>	<b>100</b>

\*Percentage may not add to 100 due to rounding.

**Figure 2: Royal Albert Edward Infirmary ED: Total injury attendances by age group and month, January 2012 to December 2012**



**Figure 3: Royal Albert Edward Infirmary ED: Total injury attendances by age group and injury group (excluding other injury), January 2012 to December 2012**



**Table 2: Royal Albert Edward Infirmary ED: Total injury attendances by location of incident and month, January 2012 to December 2012<sup>1</sup>**

Location	Jan	Feb	Mar	Apr	May	Jun	Jul	Aug	Sep	Oct	Nov	Dec	Total	%
Home	1287	1178	1369	1156	1344	1283	1298	1369	1214	1148	1155	1203	15004	44
Other	784	841	984	892	1081	975	992	1020	887	901	817	708	10882	32
Public place	242	253	315	312	359	265	295	313	361	240	165	248	3368	10
Work	238	212	254	195	262	228	219	253	203	225	207	193	2689	8
Education establishments	136	168	266	80	222	171	108	***	160	225	178	<105	1821	5
<b>Total</b>	<b>2687</b>	<b>2652</b>	<b>3188</b>	<b>2635</b>	<b>3268</b>	<b>2922</b>	<b>2912</b>	<b>2958</b>	<b>2825</b>	<b>2739</b>	<b>2522</b>	<b>2456</b>	<b>33764</b>	<b>100</b>

**Table 3: Royal Albert Edward Infirmary ED: Total injury attendances by ethnicity and month, January 2012 to December 2012<sup>1,2\*</sup>**

Location	Jan	Feb	Mar	Apr	May	Jun	Jul	Aug	Sep	Oct	Nov	Dec	Total	%
White	2558	2578	3081	2563	3183	2827	2823	2868	2725	2656	2437	2370	32669	97
Not recorded	62	27	32	21	29	34	29	31	33	29	25	27	379	1
Not stated	36	30	42	22	21	27	22	25	26	18	14	17	300	1
Black	13	***	10	12	16	14	19	<7	14	10	14	12	144	0
Mixed	5	7	9	6	8	5	8	16	12	18	15	14	123	0
Asian other	6	***	6	***	***	***	***	***	5	***	***	6	43	0
Chinese	0	***	5	***	***	5	***	***	5	***	***	***	38	0
Indian	<6	***	***	***	***	***	***	5	***	***	6	***	38	0
Pakistani	***	0	***	***	0	***	***	***	***	0	***	***	23	0
Any other ethnic group	0	0	0	0	0	***	0	0	0	0	***	***	***	0
Bangladeshi	0	0	0	0	0	0	0	0	0	***	***	0	***	0
<b>Total</b>	<b>2687</b>	<b>2652</b>	<b>3188</b>	<b>2635</b>	<b>3268</b>	<b>2922</b>	<b>2912</b>	<b>2958</b>	<b>2825</b>	<b>2739</b>	<b>2522</b>	<b>2456</b>	<b>33764</b>	<b>100</b>

\*Percentages may not add up to 100 due to rounding.

<sup>1</sup> Please note that all numbers less than five have been suppressed in line with patient confidentiality and if there is only one number <5 in a category then two numbers will be suppressed at the next level.

<sup>2</sup> White=Irish, British, other white background; Mixed=white and black, white and Asian, mixed any other; Black=African, Caribbean, other black.

**Table 4: Royal Albert Edward Infirmary ED: Total injury attendances by method of disposal and month, January 2012 to December 2012<sup>3</sup>**

Disposal	Jan	Feb	Mar	Apr	May	Jun	Jul	Aug	Sep	Oct	Nov	Dec	Total	%
Discharged	1482	1530	1886	1495	1913	1675	1686	1690	1590	1643	1517	1324	19431	58
Referral/follow-up	1059	981	1159	1031	1196	1126	1094	1122	1098	981	873	940	12660	37
Admitted	114	111	119	103	150	121	127	129	126	107	126	182	1515	4
Other	32	30	24	6	9	0	5	17	11	8	6	10	158	0
<b>Total</b>	<b>2687</b>	<b>2652</b>	<b>3188</b>	<b>2635</b>	<b>3268</b>	<b>2922</b>	<b>2912</b>	<b>2958</b>	<b>2825</b>	<b>2739</b>	<b>2522</b>	<b>2456</b>	<b>33764</b>	<b>100</b>

**Table 5: Royal Albert Edward Infirmary ED: Total injury attendances by method of disposal and injury group, January 2012 to December 2012\***

Disposal	Assault		DSH		Other injury		RTC		Total	
	n	%	n	%	n	%	n	%	n	%
Discharged	618	57	227	43	17679	57	907	89	19431	58
Referral/follow-up	407	37	203	38	11961	38	89	9	12660	37
Admitted	<47	4	75	14	1372	4	<23	2	1515	4
Other	<16	1	24	5	115	0	***	0	158	0
<b>Total</b>	<b>1086</b>	<b>100</b>	<b>529</b>	<b>100</b>	<b>31127</b>	<b>100</b>	<b>1022</b>	<b>100</b>	<b>33764</b>	<b>100</b>

\*Percentages may not add up to 100 due to rounding.

**Table 6: Royal Albert Edward Infirmary ED: Total injury attendances by arrival mode and month, January 2012 to December 2012**

Arrival mode	Jan	Feb	Mar	Apr	May	Jun	Jul	Aug	Sep	Oct	Nov	Dec	Total	%
Other	2277	2290	2793	2273	2836	2525	2543	2522	2411	2293	2116	2022	28901	86
Ambulance	410	362	395	362	432	397	369	436	414	446	406	434	4863	14
<b>Total</b>	<b>2687</b>	<b>2652</b>	<b>3188</b>	<b>2635</b>	<b>3268</b>	<b>2922</b>	<b>2912</b>	<b>2958</b>	<b>2825</b>	<b>2739</b>	<b>2522</b>	<b>2456</b>	<b>33764</b>	<b>100</b>

**Table 7: Royal Albert Edward Infirmary ED: Total assault and injury attendances by gender, mode of arrival, incident location and age group, January 2012 to December 2012**

	Assault attendees (n=1,086)		All injuries % (n=33,764)
	n	%	%
<b>Gender</b>			
Female	342	31	44
Male	744	69	56
<b>Arrival mode</b>			
Ambulance	383	35	14
Other	703	65	86
<b>Location</b>			
Other	322	30	32
Public place	418	38	10
Home	288	27	44
Work	40	4	8
Educational establishment	18	2	5
<b>Age group</b>			
0 to 4	13	1	9
5 to 19	226	21	26
20 to 34	496	46	24
35 to 49	244	22	18
50 to 64	81	7	11
65 plus	26	2	12

Author: Jennifer Brizell, Published: February 2013

For further information contact: Val Upton, Centre for Public Health, Research Directorate, Liverpool John Moores University, 2nd Floor, Henry Cotton Building, 15-21 Webster Street, Liverpool, L3 2ET

Tel: 0151 231 4500 or Email: [j.s.brizell@ljmu.ac.uk](mailto:j.s.brizell@ljmu.ac.uk) Website: [www.tiig.info](http://www.tiig.info) (data requests should be made through the website)

<sup>3</sup> Admitted=admitted to hospital bed; Discharged=discharged - did not require any follow-up treatment; Referral/follow-up=discharged - follow-up treatment to be provided by GP, referred to ED clinic, referred to fracture clinic, referred to other out-patient clinic, transferred to other health care provider; Other=died in department, left department before being treated, left department having refused treatment.